


SUBMITTAL REVIEW

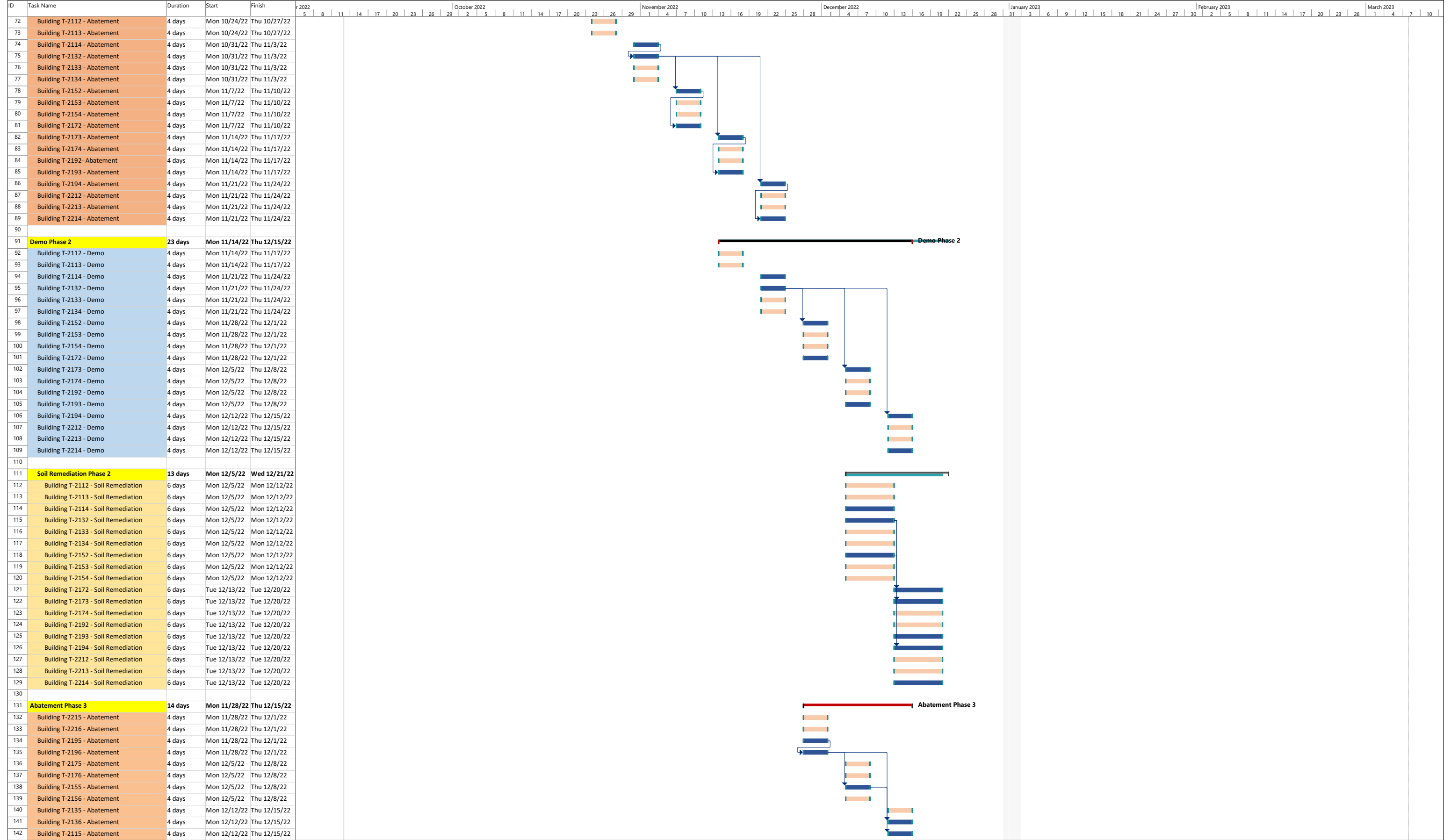
- NO EXCEPTIONS TAKEN
- MAKE CORRECTIONS NOTED (NO RESUBMITTAL REQUIRED)
- AMEND AND RESUBMIT
- REJECTED-RESUBMIT



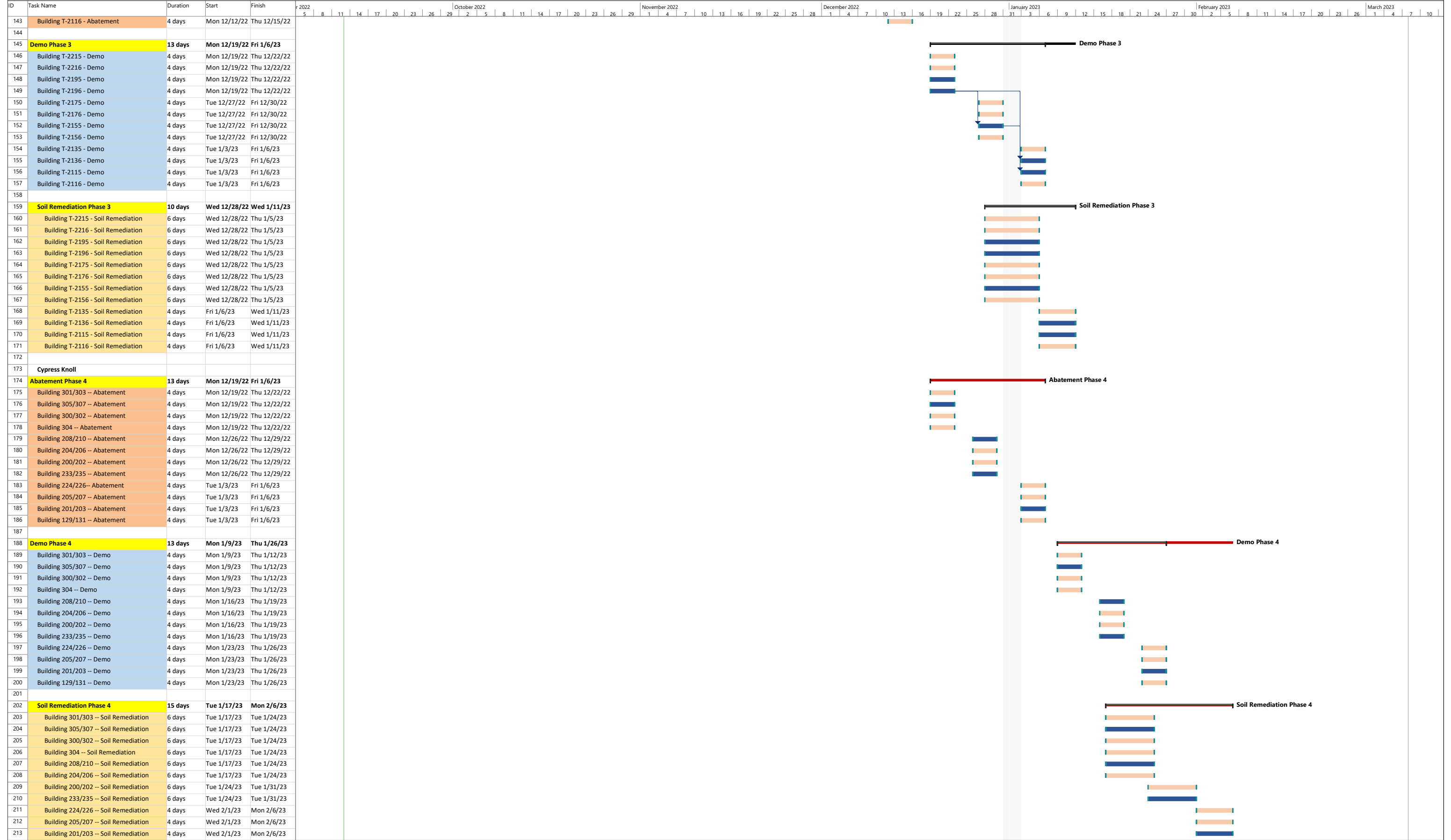
Engineer/Professional **Date**

Review and approval of this Contractor submittal by the Engineer does not in any way relieve contractor from meeting the obligations of and complying with the contract documents including but not limited to operability, functionality and serviceability.

City Park Barracks and Cypress Knolls Building Blight Removal 2022 Project



UEI - Blight Removal 2022 Project Schedule |
 Task Milestone |
 Project Summary |
 Inactive Milestone |
 Manual Task |
 Manual Summary Rollup |
 Start-only |
 External Tasks |
 Deadline |
 Baseline Milestone |
 Progress |
 Slippage |
 Split |
 Summary |
 Inactive Task |
 Inactive Summary |
 Duration-only |
 Manual Summary |
 Finish-only |
 External Milestone |
 Baseline |
 Baseline Summary |
 Manual Progress



UEI - Blight Removal 2022 Project Schedule

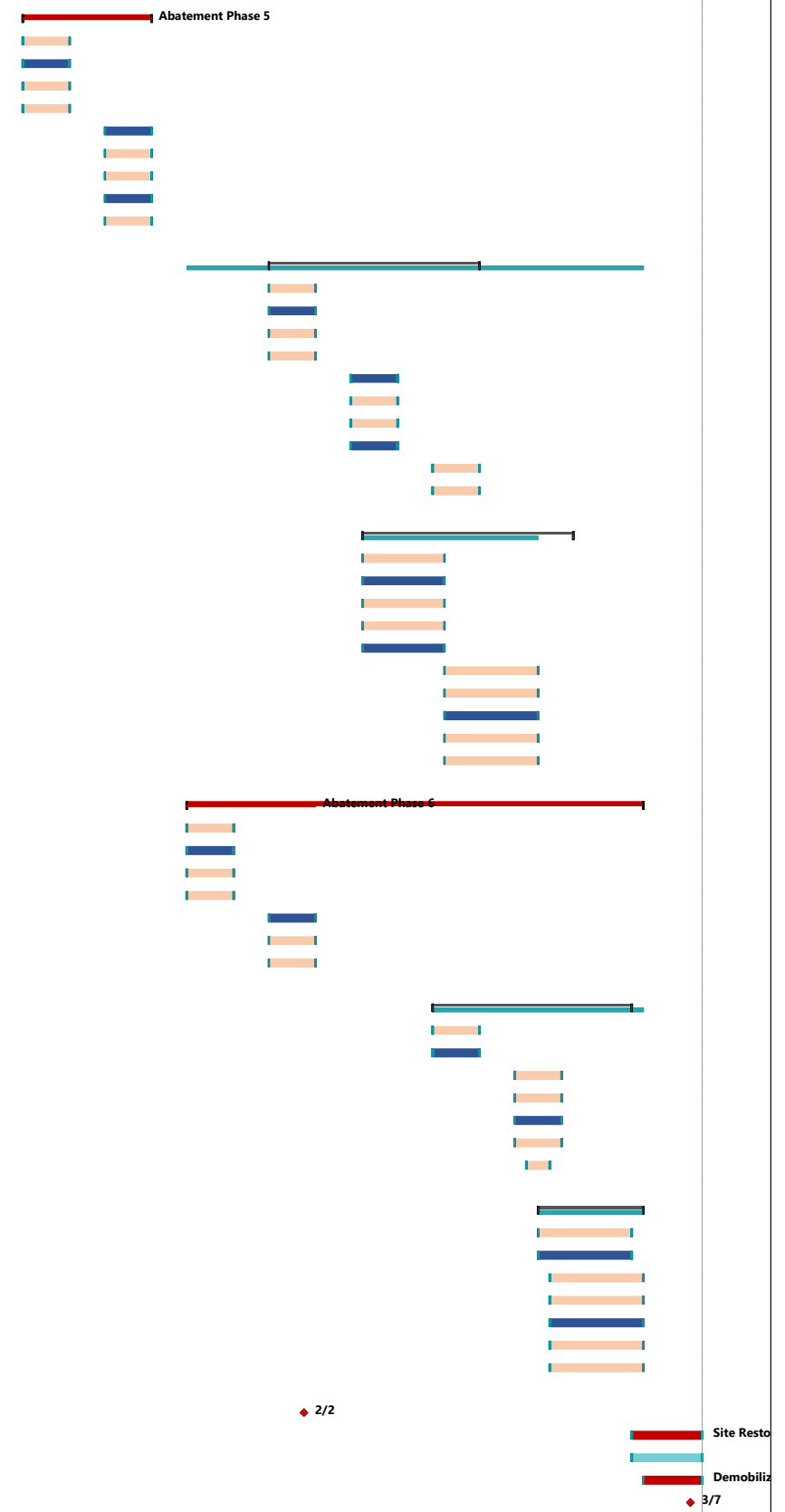
Task Milestone Project Summary Inactive Milestone Manual Task Manual Summary Rollup Start-only External Tasks Deadline Baseline Milestone Progress Slippage

Split Summary Inactive Task Inactive Summary Duration-only Manual Summary Finish-only External Milestone Baseline Baseline Summary Manual Progress

Page 3

City Park Barracks and Cypress Knolls Building Blight Removal 2022 Project

ID	Task Name	Duration	Start	Finish
214	Building 129/131 -- Soil Remediation	4 days	Wed 2/1/23	Mon 2/6/23
215				
216	Abatement Phase 5	8 days	Mon 1/9/23	Thu 1/19/23
217	Building 124/126 -- Abatement	4 days	Mon 1/9/23	Thu 1/12/23
218	Building 128/130 -- Abatement	4 days	Mon 1/9/23	Thu 1/12/23
219	Building 105/107 -- Abatement	4 days	Mon 1/9/23	Thu 1/12/23
220	Building 101/103 -- Abatement	4 days	Mon 1/9/23	Thu 1/12/23
221	Building 201/203 -- Abatement	4 days	Mon 1/16/23	Thu 1/19/23
222	Building 100/102 -- Abatement	4 days	Mon 1/16/23	Thu 1/19/23
223	Building 104/106 -- Abatement	4 days	Mon 1/16/23	Thu 1/19/23
224	Building 101/103 -- Abatement	4 days	Mon 1/16/23	Thu 1/19/23
225	Building 105/107 -- Abatement	4 days	Mon 1/16/23	Thu 1/19/23
226				
227	Demo Phase 5	14 days	Mon 1/30/23	Thu 2/16/23
228	Building 124/126 -- Demo	4 days	Mon 1/30/23	Thu 2/2/23
229	Building 128/130 -- Demo	4 days	Mon 1/30/23	Thu 2/2/23
230	Building 105/107 -- Demo	4 days	Mon 1/30/23	Thu 2/2/23
231	Building 101/103 -- Demo	4 days	Mon 1/30/23	Thu 2/2/23
232	Building 201/203 -- Demo	4 days	Mon 2/6/23	Thu 2/9/23
233	Building 100/102 -- Demo	4 days	Mon 2/6/23	Thu 2/9/23
234	Building 104/106 -- Demo	4 days	Mon 2/6/23	Thu 2/9/23
235	Building 101/103 -- Demo	4 days	Mon 2/6/23	Thu 2/9/23
236	Building 105/107 -- Demo	4 days	Mon 2/13/23	Thu 2/16/23
237	Building 124/126 -- Demo	4 days	Mon 2/13/23	Thu 2/16/23
238				
239	Soil Remediation Phase 5	13 days	Tue 2/7/23	Fri 2/24/23
240	Building 124/126 -- Soil Remediation	5 days	Tue 2/7/23	Mon 2/13/23
241	Building 128/130 -- Soil Remediation	5 days	Tue 2/7/23	Mon 2/13/23
242	Building 105/107 -- Soil Remediation	5 days	Tue 2/7/23	Mon 2/13/23
243	Building 101/103 -- Soil Remediation	5 days	Tue 2/7/23	Mon 2/13/23
244	Building 201/203 -- Soil Remediation	5 days	Tue 2/7/23	Mon 2/13/23
245	Building 100/102 -- Soil Remediation	5 days	Tue 2/14/23	Tue 2/21/23
246	Building 104/106 -- Soil Remediation	5 days	Tue 2/14/23	Tue 2/21/23
247	Building 101/103 -- Soil Remediation	5 days	Tue 2/14/23	Tue 2/21/23
248	Building 105/107 -- Soil Remediation	5 days	Tue 2/14/23	Tue 2/21/23
249	Building 124/126 -- Soil Remediation	5 days	Tue 2/14/23	Tue 2/21/23
250				
251	Abatement Phase 6	9 days	Mon 1/23/23	Thu 2/2/23
252	Building 200/202 -- Abatement	4 days	Mon 1/23/23	Thu 1/26/23
253	Building 204/206 -- Abatement	4 days	Mon 1/23/23	Thu 1/26/23
254	Building 104/106 -- Abatement	4 days	Mon 1/23/23	Thu 1/26/23
255	Building 100/102 -- Abatement	4 days	Mon 1/23/23	Thu 1/26/23
256	Building 117/119 -- Abatement	4 days	Mon 1/30/23	Thu 2/2/23
257	Building 121/123 -- Abatement	4 days	Mon 1/30/23	Thu 2/2/23
258	Building 120/122 -- Abatement	4 days	Mon 1/30/23	Thu 2/2/23
259				
260	Demo Phase 6	12 days	Mon 2/13/23	Wed 3/1/23
261	Building 200/202 -- Demo	4 days	Mon 2/13/23	Thu 2/16/23
262	Building 204/206 -- Demo	4 days	Mon 2/13/23	Thu 2/16/23
263	Building 104/106 -- Demo	4 days	Mon 2/20/23	Thu 2/23/23
264	Building 100/102 -- Demo	4 days	Mon 2/20/23	Thu 2/23/23
265	Building 117/119 -- Demo	4 days	Mon 2/20/23	Thu 2/23/23
266	Building 121/123 -- Demo	4 days	Mon 2/20/23	Thu 2/23/23
267	Building 120/122 -- Demo	2 days	Tue 2/21/23	Wed 2/22/23
268				
269	Soil Remediation Phase 6	7 days	Wed 2/22/23	Thu 3/2/23
270	Building 200/202 -- Soil Remediation	6 days	Wed 2/22/23	Wed 3/1/23
271	Building 204/206 -- Soil Remediation	6 days	Wed 2/22/23	Wed 3/1/23
272	Building 104/106 -- Soil Remediation	6 days	Thu 2/23/23	Thu 3/2/23
273	Building 100/102 -- Soil Remediation	6 days	Thu 2/23/23	Thu 3/2/23
274	Building 117/119 -- Soil Remediation	6 days	Thu 2/23/23	Thu 3/2/23
275	Building 121/123 -- Soil Remediation	6 days	Thu 2/23/23	Thu 3/2/23
276	Building 120/122 -- Soil Remediation	6 days	Thu 2/23/23	Thu 3/2/23
277				
278	Abatement Completion- All Buildings	0 days	Thu 2/2/23	Thu 2/2/23
279	Site Restoration	4 days	Thu 3/2/23	Tue 3/7/23
280	Punchlist	4 days	Thu 3/2/23	Tue 3/7/23
281	Demobilization	3 days	Fri 3/3/23	Tue 3/7/23
282	Completion of Project	0 days	Tue 3/7/23	Tue 3/7/23



UEI - Blight Removal 2022 Project Schedule

Task: Blue bar, Milestone: Diamond, Project Summary: Thick black bar, Inactive Milestone: Thin grey bar, Manual Task: Thin black bar, Manual Summary Rollup: Thick blue bar, Start-only: Thin blue bar, External Tasks: Thin black bar, Deadline: Thin grey bar, Baseline Milestone: Thin blue bar, Progress: Thin black bar, Slippage: Thin blue bar, Split: Dotted line, Summary: Dotted line, Inactive Task: Thin grey bar, Inactive Summary: Thin grey bar, Duration-only: Thin black bar, Manual Summary: Thick blue bar, Finish-only: Thin blue bar, External Milestone: Thin black bar, Baseline: Thin grey bar, Baseline Summary: Thick blue bar, Manual Progress: Thin black bar.

Page 4